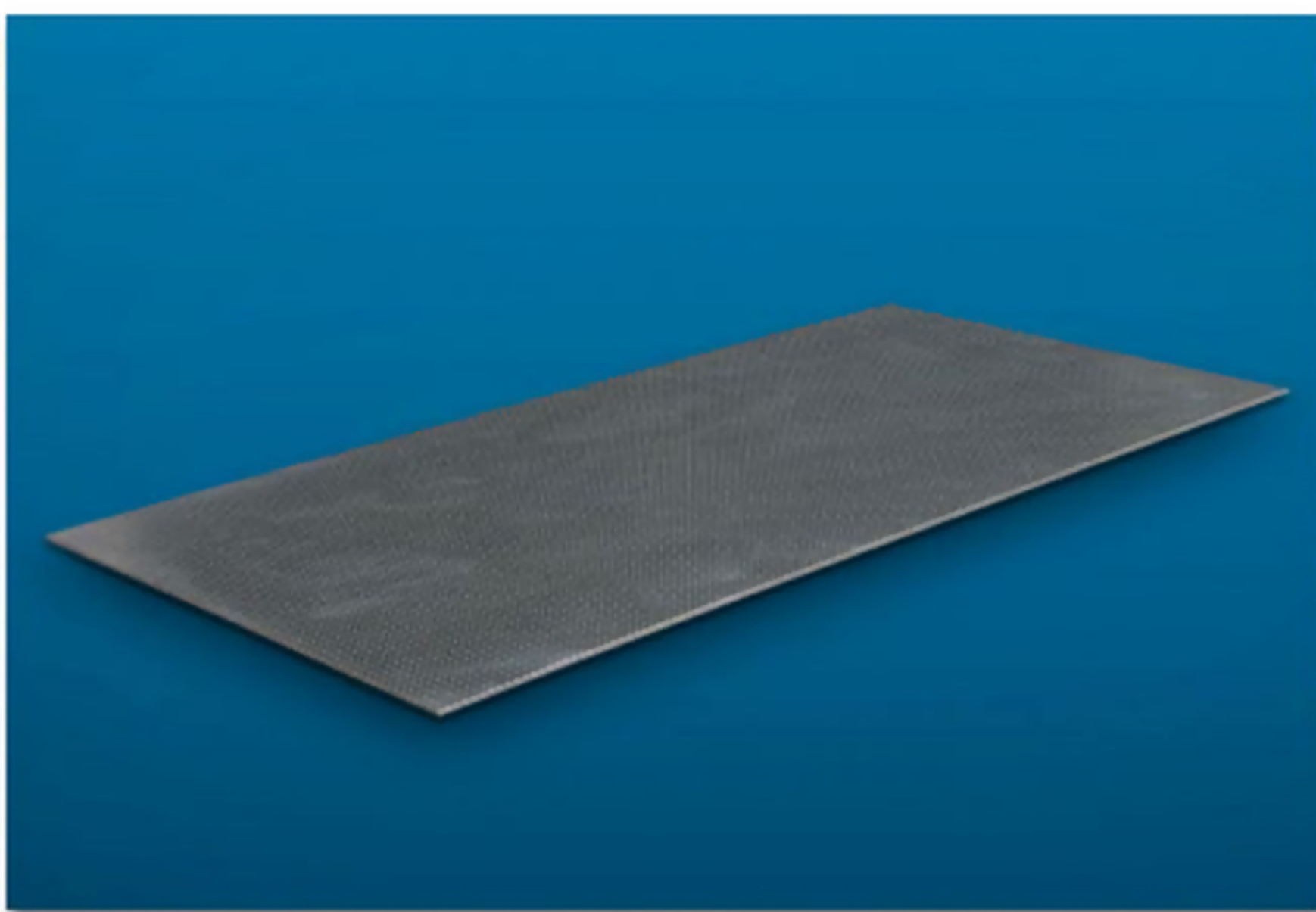


# DURASTEEL®



### Composite insulation board

DURASTEEL® consists of a calcium silicate core reinforced on both sides with perforated galvanised steel covering sheets.

The punched lugs in the steel sheets are pressed into the core board giving the DURASTEEL® composite board a very high mechanical strength once the drying process is finished.

DURASTEEL® comes in two thicknesses and the material is classified as class A1, non-combustible.

Technical data			
Thickness	mm	6	9.5
Building material class	DIN 4102	A1, non-combustible	A1, non-combustible
Classification temperature			
Permanent stress	°C	400	400
Short term up to	°C	1000	1000
Bulk density	kg/m <sup>3</sup>	2800	2210
Cold compressive strength	N/mm <sup>2</sup>	60	60
Bending strength	N/mm <sup>2</sup>	109	84
Tensile strength	N/mm <sup>2</sup>	32	30
Modulus of elasticity E	N/mm <sup>2</sup>	55000	40000
Thermal conductivity			
20 °C	W/m K	0.55	0.55
Sound insulation	dB	28	30
Board weight	kg/m <sup>2</sup>	16.8	21
Moisture content (air-dry)	%	6	6
Water absorption	%	14	14

Delivery sizes			
Thickness	mm	6	9.5
Length	mm	2500	2500
Width	mm	1200	1200

Other sizes are available on request.

Production tolerances			
Thickness	mm	+ 1.5 / - 0	± 1.0
Length and width	mm	± 2.0	± 2.0