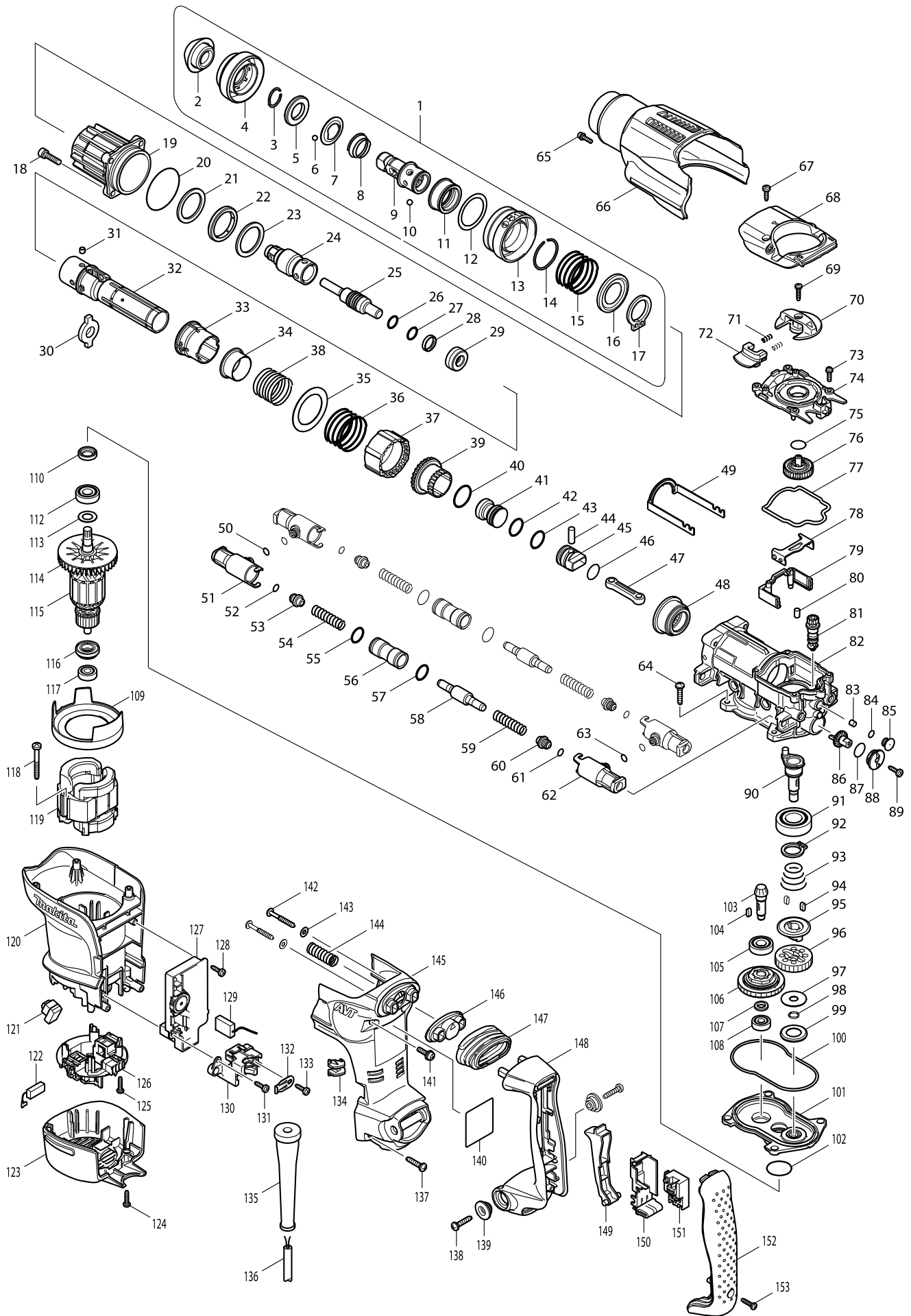


Model No. HR3210FCT ROTARY HAMMER 32MM



Model No. HR3210FCT ROTARY HAMMER 32MM

Item	Parts No.	Description	I/C	Qty	N/O	Opt. 1	Opt. 2	Note
001	125420-8	TOOL HOLDER ASS'Y		1				
D10		INC. 2-17						
002	286282-0	TOOL HOLDER CAP		1				
003	233940-9	RING SPRING 19		1				
004	450245-4	CHUCK COVER		1				
005	257288-5	RING 21		1				
006	216022-2	STEEL BALL 7.0		2				
007	345873-7	GUIDE WASHER		1				
008	234049-0	CONICAL COMPRESSIONSPRING22-3		1				
009	324842-1	TOOL HOLDER		1				
010	216013-3	STEEL BALL 6		3				
011	331801-8	CHANGE RING		1				
012	267362-1	FLAT WASHER 37		1				
013	450258-5	CHANGE COVER		1				
014	231988-5	RING SPRING 34		1				
015	234052-1	COMPRESSION SPRING 42		1				
016	345870-3	WASHER 28		1				
017	961108-4	RETAINING RING S-28		1				
018	922341-3	HEX. SOCKET HEAD BOLT M6X25		4				
019	158533-0	BARREL COMPLETE		1				
C10	213436-6	OIL SEAL 28		1				
C20	213516-8	O RING 36		1	*			
C21	213142-3	O-RING 35	O	1				
020	213656-2	O RING 53		1				
021	267810-0	FLAT WASHER 34		1				
022	262138-1	URETHAN RING 34		1				
023	267810-0	FLAT WASHER 34		1				
024	324841-3	TOOL HOLDER GUIDE		1				
025	324850-2	IMPACT BOLT		1				
026	213228-3	O RING 15		1				
027	213228-3	O RING 15		1				
028	213321-3	FLUORO CARBON RESIN RING 20		1				
029	424062-8	RUBBER RING 13		1				
030	324838-2	SLIDE PLATE		1				
031	256266-2	PIN 6		4				
032	331794-9	CYLINDER 25		1				
033	450243-8	SLIDE SLEEVE		1				
034	331805-0	RING 29		1				
035	267360-5	FLAT WASHER 40		1				
036	234052-1	COMPRESSION SPRING 42		1				
037	450236-5	LOCK SLEEVE		1				
038	234050-5	COMPRESSION SPRING 34		1				
039	331795-7	DRIVING SLEEVE		1				
040	213434-0	O RING 26		1				
041	324858-6	STRIKER		1				
042	213283-5	O-RING 18		1				
043	213283-5	O-RING 18		1				
044	256087-2	PIN 7		1				

Model No. HR3210FCT ROTARY HAMMER 32MM

Item	Parts No.	Description	I/C	Qty	N/O	Opt. 1	Opt. 2	Note
045	324918-4	PISTON		1				
046	213262-3	O RING 18		1				
047	450235-7	CONECTING ROD		1				
048	227531-6	SPIRAL BEVEL GEAR 37		1				
049	345867-2	LINK ARM		1				
050	213030-4	O RING 8		2				
051	450248-8	PIPE HOLDER		2				
052	213030-4	O RING 8		2				
053	450239-9	SPRING GUIDE		2				
054	234048-2	COMPRESSION SPRING 10		2				
055	213275-4	O RING 18		2				
056	331800-0	PIPE 15		2				
057	213275-4	O RING 18		2				
058	324862-5	COUNTER WEIGHT		2				
059	234048-2	COMPRESSION SPRING 10		2				
060	450239-9	SPRING GUIDE		2				
061	213030-4	O RING 8		2				
062	450248-8	PIPE HOLDER		2				
063	213030-4	O RING 8		2				
064	266041-8	TAPPING SCREW 5X25		4				
065	922123-3	HEX. SOCKET HEAD BOLT M4X14		1				
066	450254-3	CRANK HOUSING COVER		1				
067	266192-7	TAPPING SCREW 4X14		2				
068	318201-9	CRANK CAP COVER		1				
069	265995-6	TAPPING SCREW 4X18		1				
070	450249-6	CHANGE LEVER		1				
071	233436-0	COMPRESSION SPRING 3		2				
072	450250-1	LOCK BUTTON		1				
073	911128-8	PAN HEAD SCREW M4X16		5				
074	450241-2	CRANK CAP		1				
075	213223-3	O RING 16		1				
076	158437-6	SPUR GEAR 33 COMPLETE		1				
077	424064-4	SEAL RING B		1				
078	345868-0	LINK PLATE		1				
079	450247-0	AIR PIPE		1	*			
079-1	453866-1	AIR PIPE	<	1				
080	263005-3	RUBBER PIN 6		2				
081	450242-0	GEAR SHAFT		1	*			
081-1	452126-8	GEAR SHAFT	S	1				
082	158531-4	CRANK HOUSING COMPLETE		1	*			
C10	213579-4	O-RING 44		1	*			
082-1	158712-0	CRANK HOUSING COMPLETE	O	1	*			
C10	213579-4	O-RING 44		1	*			
082-2	158712-0	CRANK HOUSING COMPLETE	O	1				
C10	213579-4	O-RING 44		1				
083	443138-2	FILTER		1				
084	213030-4	O RING 8		1				
085	450238-1	FILTER CAP		1				

Model No. HR3210FCT ROTARY HAMMER 32MM

Item	Parts No.	Description	I/C	Qty	N/O	Opt. 1	Opt. 2	Note
086	450244-6	CRANK GEAR		1				
087	213223-3	O RING 16		1	*			
087-1	213176-6	O RING 14	<	1				
088	450237-3	CAP HOLDER		1				
089	266192-7	TAPPING SCREW 4X14		1				
090	324839-0	CRANK SHAFT		1				
091	211332-2	BALL BEARING 6004LLU		1				
092	961060-6	RETAINING RING S-20		1				
093	231991-6	CONICAL COMP. SPRING 21-31		1				
094	254239-9	KEY 4		2				
095	324848-9	CLUTCH		1				
096	227188-3	SPUR GEAR 33		1				
097	253197-6	FLAT WASHER 10		1				
098	961036-3	RETAINING RING WR-10		1				
099	345869-8	CUP WASHER 18		1				
100	424063-6	SEAL RING A		1				
101	158534-8	GEAR HOUSING COMPLETE		1				
102	213415-4	O RING 28		1				
103	227533-2	SPIRAL BEVEL GEAR 9		1				
104	254239-9	KEY 4		1				
105	210105-0	BALL BEARING 6001LLU		1				
106	125421-6	TORQUE LIMITER ASSY		1				
107	257291-6	RING 10		1				
108	210005-4	BALL BEARING 608DDW		1				
109	450251-9	BAFFLE PLATE		1				
110	213133-4	OIL SEAL 12		1				
112	210105-0	BALL BEARING 6001LLU		1				
113	253084-9	FLAT WASHER 12		1				
114	241863-7	FAN 70		1				
115	513748-0	ARMATURE ASS'Y 220-240V		1				
D10		INC. 112-114,116,117						
116	681650-6	INSULATION WASHER		1				
117	210005-4	BALL BEARING 608DDW		1				
118	266056-5	TAPPING SCREW 5X45		2				
119	625813-4	FIELD 220-240V		1				
120	450260-8	MOTOR HOUSING		1				
121	631785-3	LED CIRCUIT		1				
122	194160-9	CARBON BRUSH CB-350		1				
123	450253-5	REAR COVER		1				
124	265995-6	TAPPING SCREW 4X18		2				
125	265995-6	TAPPING SCREW 4X18		4				
126	638519-5	BRUSH HOLDER UNIT		1				
127	631783-7	CONTROLLER		1				
128	266192-7	TAPPING SCREW 4X14		1	*			
128-1	266901-4	TAPPING SCREW 4X14	<	1				
129	638406-8	LEAD UNIT		1				
130	450246-2	CORD CLAMP BASE		1				
131	266192-7	TAPPING SCREW 4X14		1	*			

Model No. HR3210FCT ROTARY HAMMER 32MM

Item	Parts No.	Description	I/C	Qty	N/O	Opt. 1	Opt. 2	Note
131-1	266901-4	TAPPING SCREW 4X14	<	1				
132	687169-3	STRAIN RELIEF		1				
133	266192-7	TAPPING SCREW 4X14		1				
134	450240-4	LENS		1				
135	682560-0	CORD GUARD 10		1				
136	695123-3	POWER SUPPLY CORD 1.5-2-4.0		1				
137	266041-8	TAPPING SCREW 5X25		2				
138	266041-8	TAPPING SCREW 5X25		2				
139	450352-3	SHOULDER SLEEVE 6		2				
140	864544-2	HR3210FCT NAME PLATE		1				
141	911233-1	PAN HEAD SCREW M5X20		2				
142	266211-9	TAPPING SCREW 5X40		2				
143	267066-5	FLAT WASHER 5		2				
144	234051-3	COMPRESSION SPRING 11		1				
145	450255-1	HANDLE BASE		1				
146	419014-2	DUST COVER SUPPORT		1				
147	421912-8	DUST COVER		1				
148	450256-9	HANDLE		1				
149	419025-7	SWITCH LEVER		1				
150	154626-1	SWITCH HOLDER COMPLETE		1				
151	650567-4	SWITCH TG73B-1		1	*			
151-1	650676-9	SWITCH C3PA-1111	<	1				
152	450257-7	HANDLE COVER		1				
153	265995-6	TAPPING SCREW 4X18		1				
154	267383-3	FLAT WASHER 22		1				
155	267721-9	WAVE WASHER 15		1				
156	213083-3	O RING 9		1				
A01	194568-7	DRILL CHUCK SET		1	*			
A01-1	194568-7	DRILL CHUCK SET	<	1				
A02	181573-3	GREASE VESSEL 93G		1	*			
A02-1	194683-7	GREASE VESSEL SET	O	1				
A03	135197-7	GRIP 36 ASS'Y		1				
C10	265701-9	SCREW M6X14		1				
C20	266163-4	CUP SQUARE NECK BOLT M8X80		1				
C30	321248-4	DEPTH GAUGE		1				
C40	344492-6	PLATE		1				
C50	344811-6	GRIP SPRING 63		1				
C60	417026-9	SIDE GRIP BASE 63		1				
C70	931302-2	HEX. NUT M6		1				
A04	824825-6	PLASTIC CARRYING CASE		1				
C10	163467-4	LATCH		2				
A05	810409-6	CAUTION CARD		1				
A06	806483-0	HR3210FCT MODEL NO.LABEL		1				